

求積図

S=1/500

掛川市細谷字山合

座標求積表

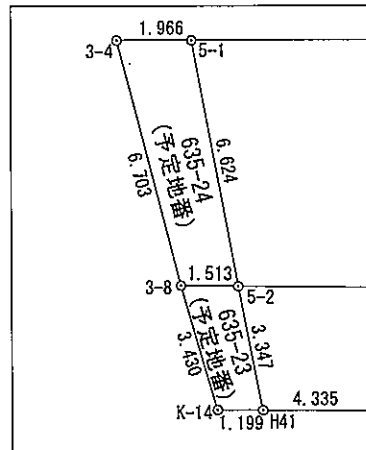
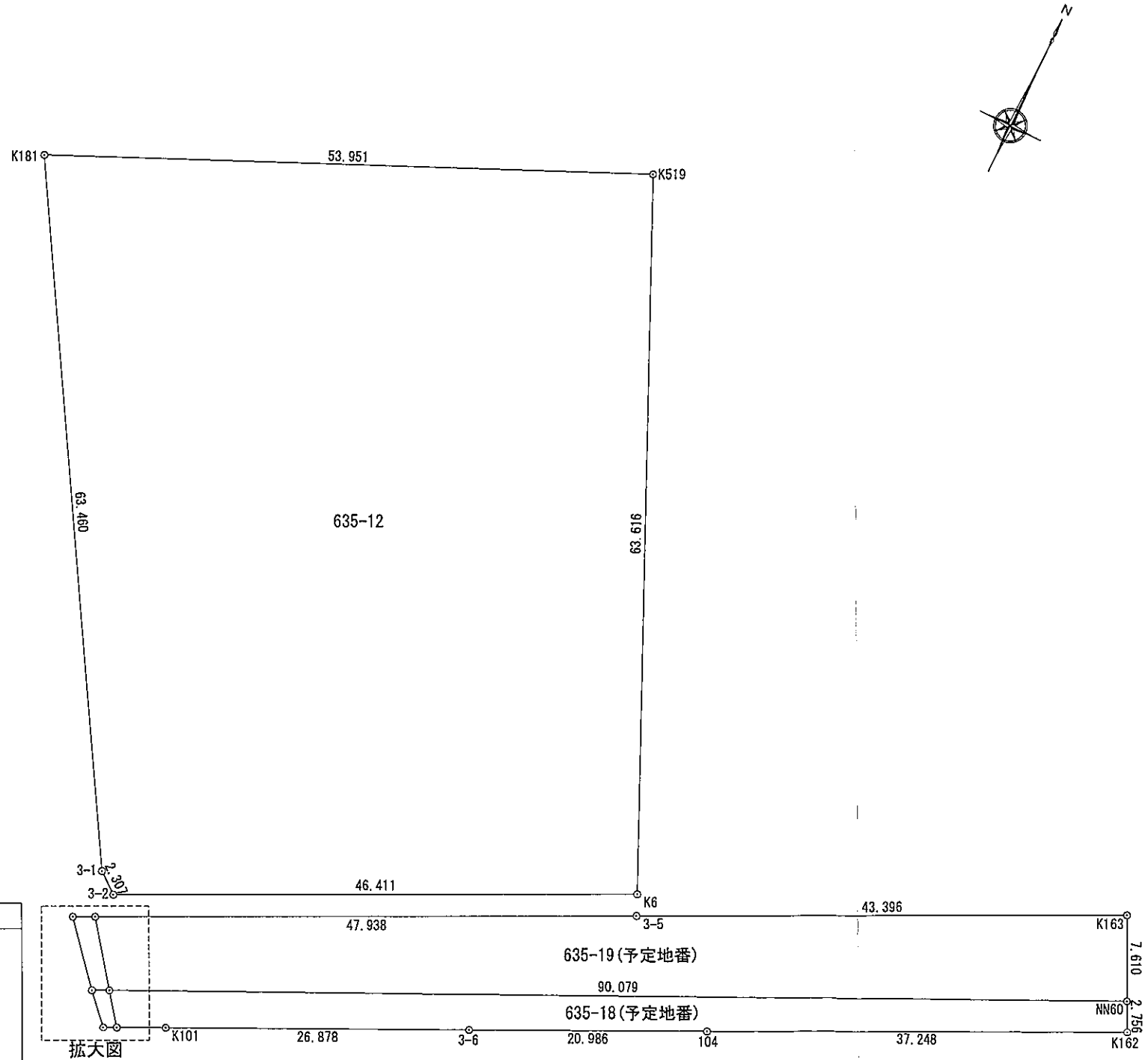
地番 635-18(予定地番)			
測点	Xn	Yn	(Xn+1 - Xn-1)Yn
5-2	-134,984.324	-49,082.464	2,035,547.947008
H41	-134,986.988	-49,080.437	38,233.660423
K101	-134,985.103	-49,076.533	-666,115.782409
3-6	-134,973.415	-49,052.329	-1,020,729.914161
104	-134,964.294	-49,033.428	-1,247,067.174324
K162	-134,947.982	-48,999.941	-920,120.892098
NN60	-134,945.516	-49,001.173	1,780,800.629166
倍面積			548.473605
面積			274.2368025
地積			274.23 m ²
坪数			82.95

地番 635-19(予定地番)			
測点	Xn	Yn	(Xn+1 - Xn-1)Yn
5-1	-134,979.014	-49,086.425	1,301,182.953900
5-2	-134,984.324	-49,082.464	-1,644,164.379072
NN60	-134,945.516	-49,001.173	-2,237,393.559180
K163	-134,938.664	-49,004.486	602,755.177800
3-5	-134,957.816	-49,043.428	1,978,902.319800
倍面積			1,282.513248
面積			641.2566240
地積			641.25 m ²
坪数			193.98

地番 635-23(予定地番)			
測点	Xn	Yn	(Xn+1 - Xn-1)Yn
3-8	-134,984.976	-49,083.830	156,331.998550
K-14	-134,987.509	-49,081.517	98,752.012204
H41	-134,986.988	-49,080.437	-156,321.191845
5-2	-134,984.324	-49,082.464	-98,753.917568
倍面積			8.901341
面積			4.4506705
地積			4.45 m ²
坪数			1.34

地番 635-24(予定地番)			
測点	Xn	Yn	(Xn+1 - Xn-1)Yn
3-4	-134,979.883	-49,088.189	292,663.782818
3-8	-134,984.976	-49,083.830	217,981.289030
5-2	-134,984.324	-49,082.464	-292,629.650368
5-1	-134,979.014	-49,086.425	-217,992.813425
倍面積			22.608055
面積			11.3040275
地積			11.30 m ²
坪数			3.41

地番 635-12			
測点	Xn	Yn	(Xn+1 - Xn-1)Yn
K181	-134,920.518	-49,119.993	3,774,527.622099
3-1	-134,975.127	-49,087.665	2,750,872.746600
3-2	-134,976.558	-49,085.855	-935,821.825575
K6	-134,956.062	-49,044.214	-3,838,886.806636
K519	-134,898.284	-49,070.836	-1,744,173.794784
倍面積			6,517.941704
面積			3,258.9708520
地積			3,258.97 m ²
坪数			985.83



拡大図 S=1/200